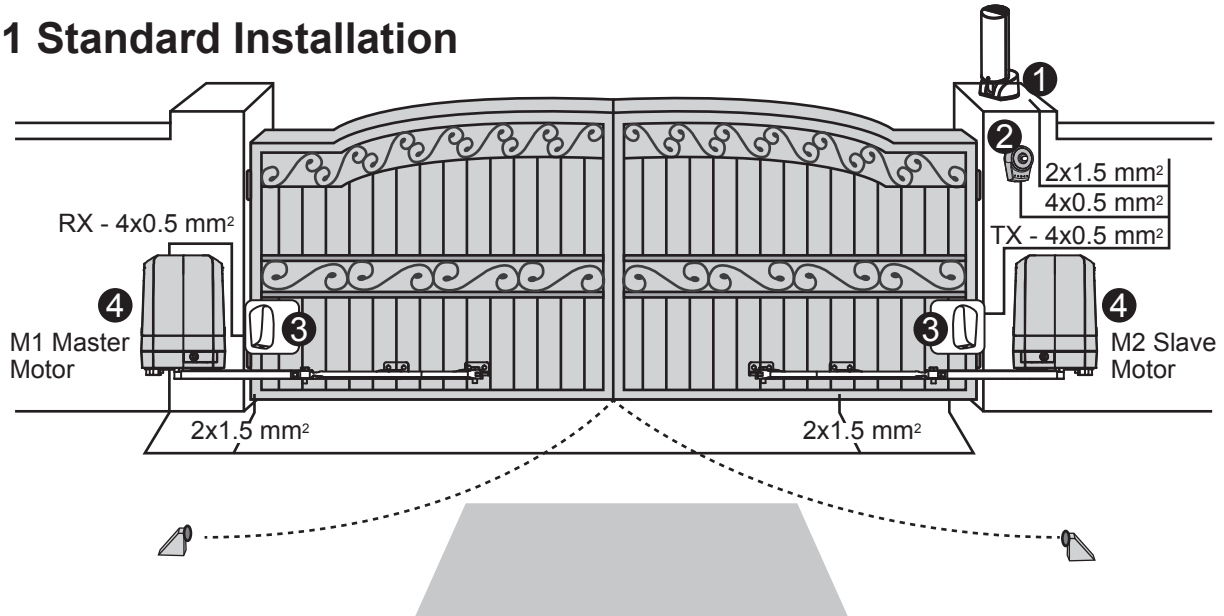


1.2 Installation

1.2.1 Standard Installation



1. 24V DC blinker with integrated antenna
2. Push Button
3. Photocells
4. 24V DC articulated arm opener
5. PR-1 Transmitter

1.2.2 Dimension Chart

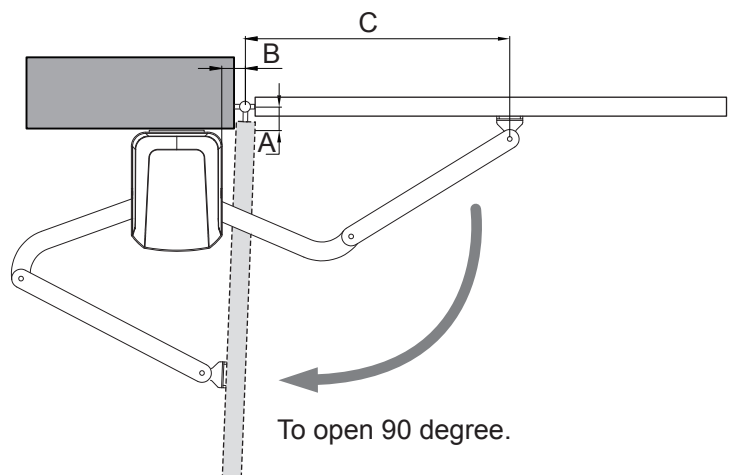
Please comply with the measures shown on the chart for proper installation. If necessary, please adjust the gate structure to the best operation.

Before starting the installation, please make sure that the gate moves freely and that :

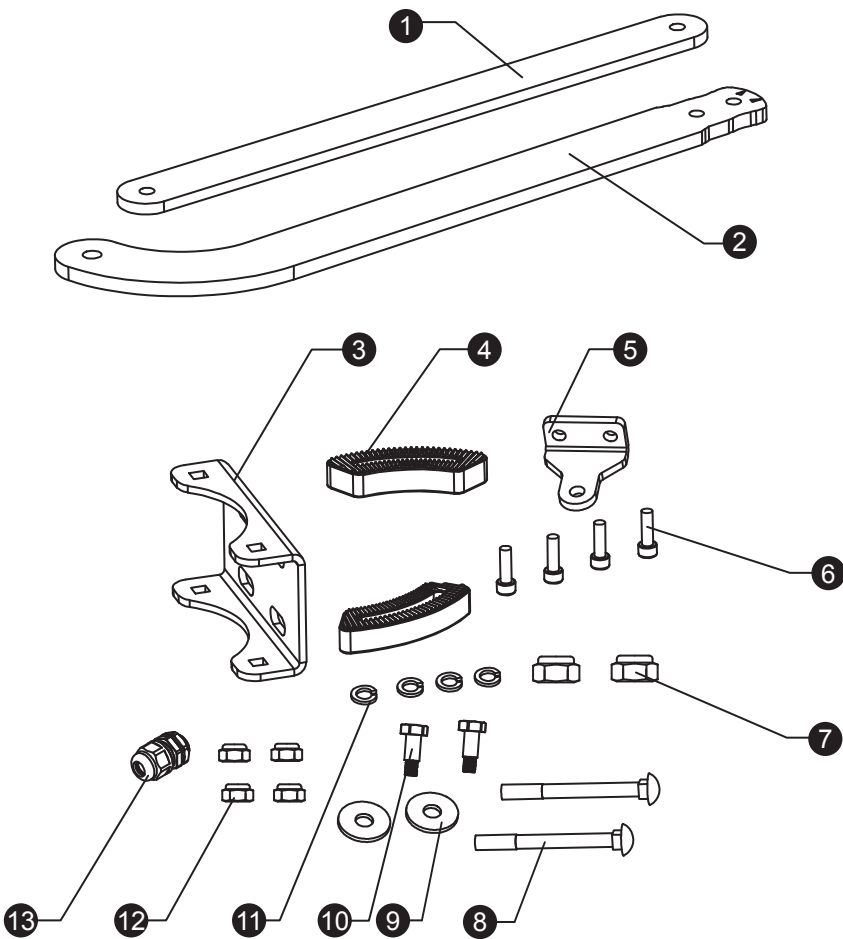
- 1) Hinges are properly positioned and greased.
- 2) No any obstacle in the moving area.
- 3) No frictions between two gate leaves or and on the ground while moving.
- 4) Installation reference: to open the gate with 90 degree, please refer the data table below:
 - A: Distance between the gate hinge and the wall bracket.
 - B: Distance between the gate hinge and side face of the motor.
 - C: Distance between the gate hinge and the fixing point of the arm.

		B		
		50	100	150
A	C ↘			
	50	625	575	545
	100	615	565	540
	150	600	550	/
	200	585	535	/
	250	565	515	/
300	540	/	/	

unit: mm



1.2.3 Components of Installation



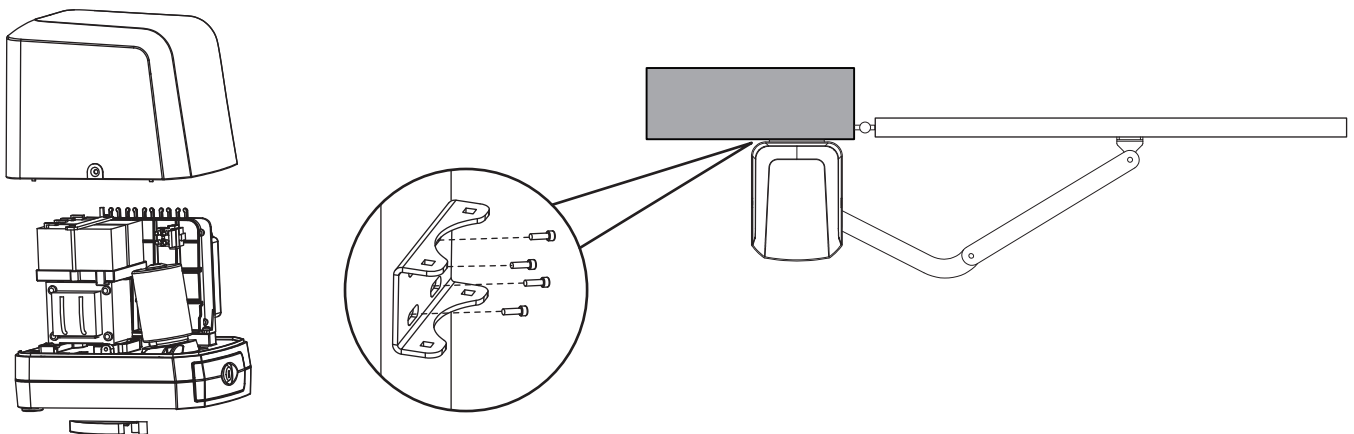
1	Straight arm	1 pce
2	Curved arm	1 pce
3	U-shaped fixing plate	1 pce
4	Mechanical stopper	2 pcs
5	Front-end fixing bracket	1 pce
6	Screw	4 pcs
7	Nut Ø10	2 pcs
8	Screw	2 pcs
9	Gasket	2 pcs
10	Screw	2 pcs
11	Spring washer	4 pcs
12	Nut Ø8	4 pcs
13	Cable gland	1 pce

1.2.4 Installation of Articulated Arm Opener

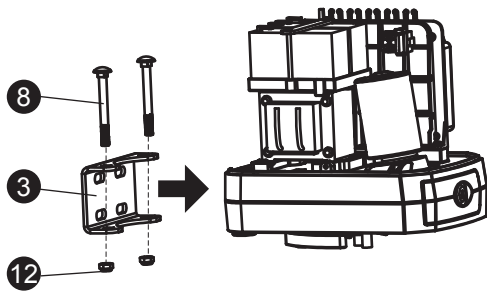
1. Refer to the Dimension Chart to choose the correct dimensions of the motors and position to be installed.
2. Check if the mounting surface of the brackets to be installed is smooth, vertical and rigid.
3. Arrange the cables for power supply cable of the motors.
4. Motor installation and setting for mechanical stopper in opened and closed position.

1) Remove the upper cover and mechanical stoppers on the bottom of motor.

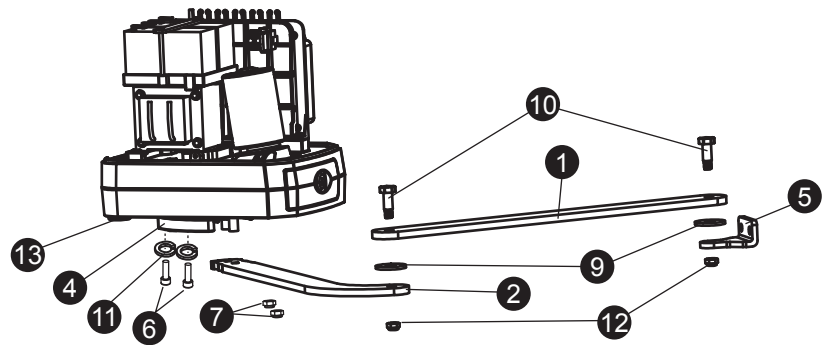
2) Place the gate in the full closed position and fix the U-shaped fixing plate on the wall.



3) Install the motor on the U-shaped fixing plate with corresponding screws and nuts.



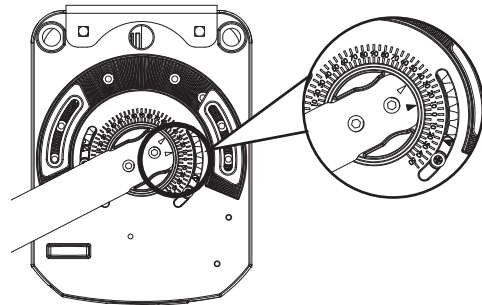
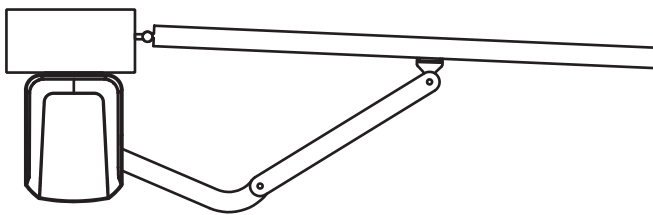
4) After positioning the front of curved arm on the bottom of motor, release the motor and position the minor arm on the end of curved arm and mounting bracket with corresponding screws and nuts.



5) Closed position adjustment :

4.1 After the full closed position decided, fix the corresponding mechanical stopper at the position.

4.2 After the full closed position decided, make the pointer on limit switch aligned with the pointer on the curved arm. (Red points shown on the figure below indicate the pointers)



6) Opened position adjustment :

5.1 Adjust the gate to full opened position and after the position decided, fixed with corresponding mechanical stopper.

5.2 Adjust the gate to full opened position and after the position decided, make the pointer on the electromechanical limit switch aligned with the pointer on the curved arm. (Red points shown on the figure below indicate the pointers)

